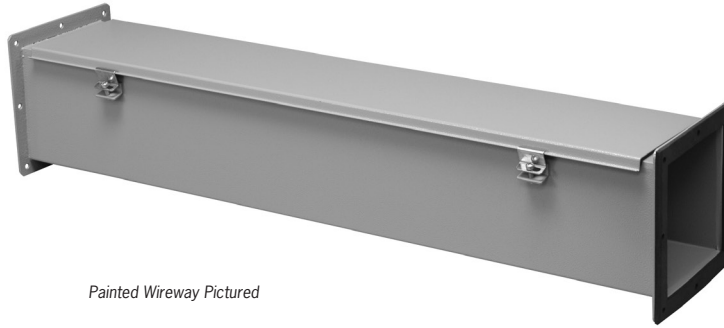


## TYPE 4X STAINLESS STEEL FEED-THROUGH WIREWAY



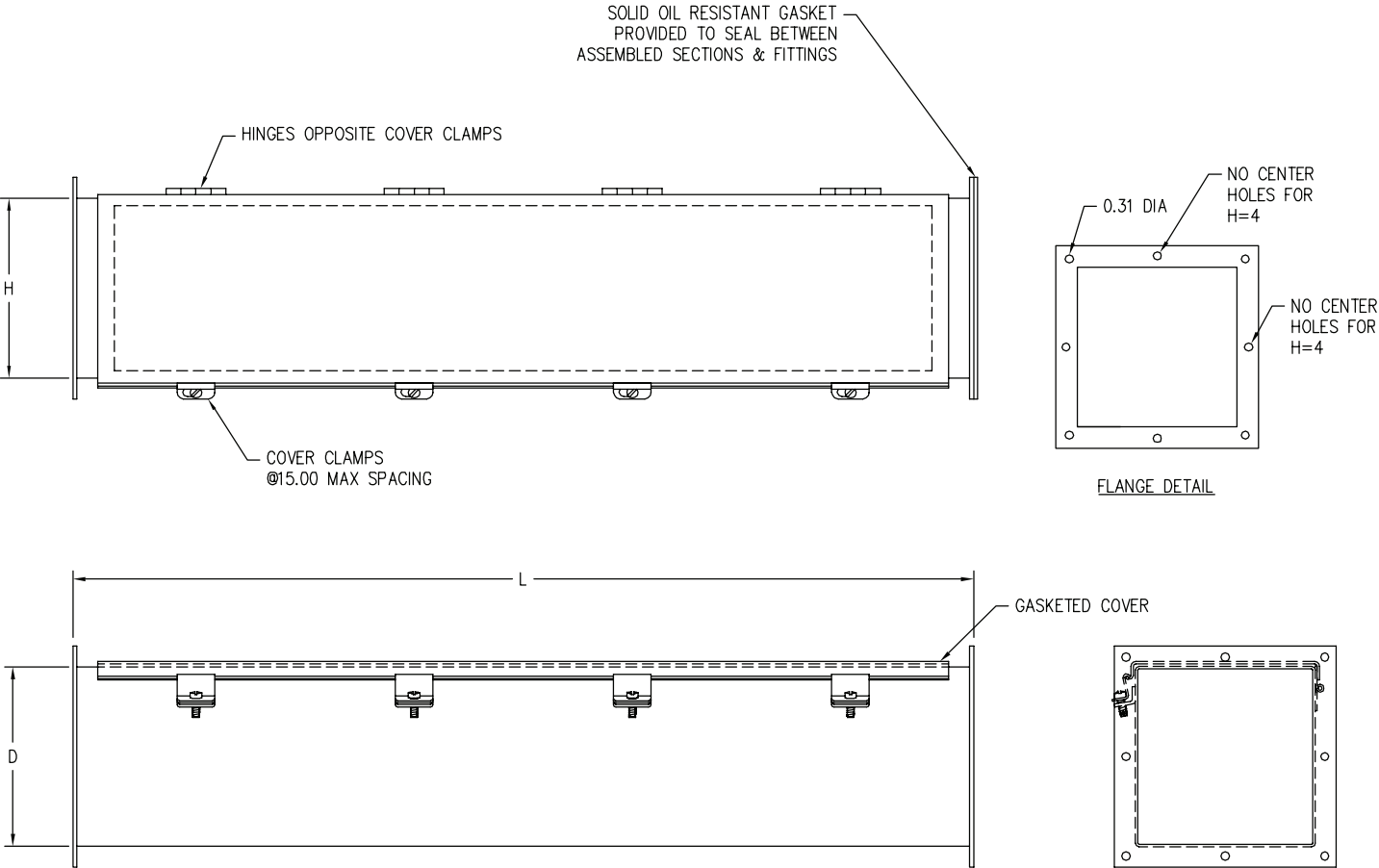
Painted Wireway Pictured

**Construction:** C & I Enclosures Type 4X Stainless Steel Feed-Through Wireway is fabricated in accordance with U.L. specifications from code gauge material. An oil resistant gasket is attached to the cover to prevent dust from entering the wireway. The cover is attached to the body with butt hinges on one side and external screw clamps on the other. All seams are continuously welded and ground smooth.

**Finish:** C & I Enclosures Type 4x Stainless Steel Feed-Through Wireway is provided unpainted with a brushed finish on the exterior.

Enclosure Size HxDxL	Catalog Number	Weight
4x4x12	I-1-44FTWT4XS	7
4x4x24	I-2-44FTWT4XS	12
4x4x36	I-3-44FTWT4XS	17
4x4x48	I-4-44FTWT4XS	21
4x4x60	I-5-44FTWT4XS	26
4x4x120	I-10-44FTWT4XS	55
Closure Plate	I-44-CPFS	1
Tee	I-44-TFS	6
Cross	I-44-CFS	8
90° - Elbow	I-44-90LFS	5
45° - Elbow	I-44-45LFS	3
Box Connector	I-44-BCFS	1
Nipple - 1"	I-44-N1FS	2
Nipple - 2"	I-44-N2FS	2
Nipple - 3"	I-44-N3FS	2
Cut Off Fitting - 12"	I-44-COFS	6
6x6x12	I-1-66FTWT4XS	10
6x6x24	I-2-66FTWT4XS	18
6x6x36	I-3-66FTWT4XS	24
6x6x48	I-4-66FTWT4XS	32
6x6x60	I-5-66FTWT4XS	40
6x6x120	I-10-66FTWT4XS	76
Closure Plate	I-66-CPFS	3
Tee	I-66-TFS	10
Cross	I-66-CFS	13
90° - Elbow	I-66-90LFS	8
45° - Elbow	I-66-45LFS	6
Box Connector	I-66-BCFS	1
Nipple - 1"	I-66-N1FS	3
Nipple - 2"	I-66-N2FS	3
Nipple - 3"	I-66-N3FS	4
Cut Off Fitting - 12"	I-66-COFS	8

TYPE 4X STAINLESS STEEL FEED-THROUGH WIREWAY



COMPLETE DETAILS AVAILABLE ON OUR WEB SITE